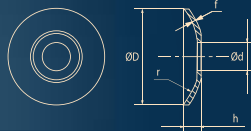
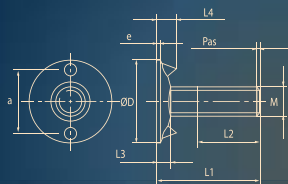


BOULONNERIE BOLTS

Pour godet à trous emboutis / For bucket with recessed holes

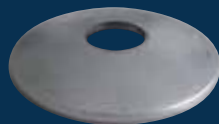


Vis à tête fraisée à ergots /
Countersunk lug bolt

| Codification | M | L1 | ØD | L2 | Pas | L3 | L4 | a | eMax |
|--------------|----|----|----|----|------|-----|----|----|------|
| Zinc* | | | | | | | | | |
| 04VEZS07025 | 7 | 25 | 20 | 18 | 1,00 | 3,5 | 5 | 14 | 1 |
| 04VEZS07028 | 7 | 28 | 24 | 18 | 1,00 | 4,0 | 6 | 16 | 1 |
| 04VEZS08030 | 8 | 30 | 25 | 20 | 1,25 | 4,5 | 6 | 18 | 1 |
| 04VEZS08035 | 8 | 35 | 28 | 18 | 1,25 | 4,5 | 6 | 20 | 1 |
| 04VEZS10040 | 10 | 40 | 35 | 30 | 1,50 | 5,5 | 7 | 25 | 1,5 |
| 04VEZX10036 | 10 | 36 | 35 | 20 | 1,50 | 7,0 | 7 | 22 | 2,0 |



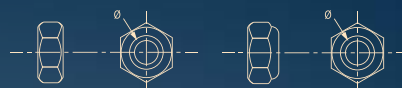
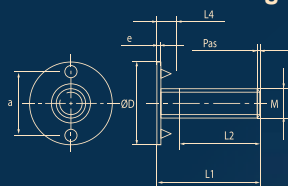
| Codification | M | ØD | Ød | h | r | f |
|--------------|----|----|-----|-----|------|-----|
| Zinc* | | | | | | |
| 50ZREZ0724 | 7 | 24 | 8,2 | 3,4 | 22,8 | 1,2 |
| 50ZREZ0829 | 8 | 29 | 8,5 | 5,2 | 22,8 | 1,2 |
| 50ZREZ1038 | 10 | 38 | 11 | 5,3 | 45,5 | 2,0 |
| 50ZREZ1240 | 12 | 40 | 13 | 8,3 | 30 | 2,0 |



| Codification | Ecrous/Nuts Zinc* | Codification | Ecrous freins/ Self locking nuts Zinc* |
|--------------|-----------------------------|--------------|---|
| 04EHZ07 | M7 | 04EFZ07 | M7 |
| 04EHZ08 | M8 | 04EFZ08 | M8 |
| 04EHZ10 | M10 | 04EFZ10 | M10 |
| 04EHZ12 | M12 | 04EFZ12 | M12 |

* Disponible en inox / Available in stainless steel

Pour godet à trous non emboutis / For bucket with no recessed holes



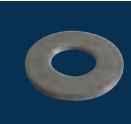
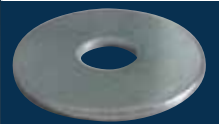
Vis à tête plate à ergots /
Flat lug bolt

| Codification | M | L1 | ØD | L2 | Pas | L4 | a | e |
|--------------|----|----|----|----|------|-----|----|-----|
| Zinc* | | | | | | | | |
| 04VEZP06030 | 6 | 30 | 20 | 25 | 1,00 | 3,7 | 15 | 1,5 |
| 04VEZP08030 | 8 | 30 | 30 | 23 | 1,25 | 4 | 22 | 1,5 |
| 04VEZP10040 | 10 | 40 | 35 | 32 | 1,50 | 5 | 25 | 2 |



Pour godet plastique /
For plastic bucket

Pour godet métal /
For steel bucket



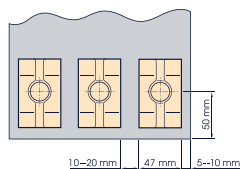
| Codification | M | ØD | Ød | f |
|--------------|----|----|------|-----|
| Zinc* | | | | |
| 04RPZ0624 | 6 | 24 | 6,3 | 1,2 |
| 04RPZ0830 | 8 | 30 | 8,3 | 1,5 |
| 04RPZ1036 | 10 | 36 | 10,5 | 2,0 |

| Codification | M | ØD | Ød | f |
|--------------|----|----|------|-----|
| Zinc* | | | | |
| 04RPZ0614 | 6 | 14 | 6,3 | 1 |
| 04RPZ0818 | 8 | 18 | 8,3 | 1,5 |
| 04RPZ1022 | 10 | 22 | 10,5 | 2,0 |

| Codification | Ecrous/Nuts Zinc* | Codification | Ecrous freins/ Self locking nuts Zinc* |
|--------------|-----------------------------|--------------|---|
| 04EHZ06 | M6 | 04EFZ06 | M6 |
| 04EHZ07 | M7 | 04EFZ07 | M7 |
| 04EHZ08 | M8 | 04EFZ08 | M8 |
| 04EHZ10 | M10 | 04EFZ10 | M10 |
| 04EHZ12 | M12 | 04EFZ12 | M12 |

* Disponible en inox / Available in stainless steel

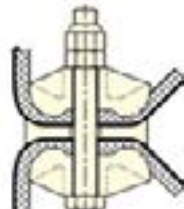
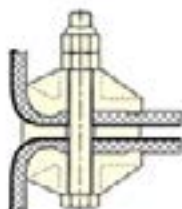
JONCTIONS DE SANGLE BELT JUNCTION



Forgées - Drop forged steel

MAXIGRIP 1 - ≤ 630 N/mm

MAXIGRIP 2 - 800 N/mm à 1 600 N/mm



MÉCANO SOUDÉES WELDED STEEL



| | S | D | DR |
|---|------------------------|------------------------|-------------------------|
| | 100 N/mm à 315 N/mm | 400 N/mm à 630 N/mm | 800 N/mm à 1000 N/mm |
| L | 50 - 98 - 128 - 148 | | |